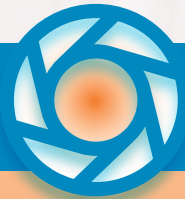


Massachusetts League of Community Health Centers
Annual Community Health Institute

reimagining care

framing the future of
community health



Sea Crest Beach Hotel, North Falmouth, MA
May 10-12, 2023



Insource is proud to support the Massachusetts League of Community Health Centers' annual Community Health Institute (CHI).

**INSOURCE**
SERVICES • INC
CELEBRATING 30 YEARS

HR, Finance, Technology, Training

Discover the managed services solution that's right for you.

insourceservices.com

HOTEL ACCOMODATIONS

Business Center

The business center is located near the Mass League registration desk. There is a computer available for hotel guests.

Quiet Room/Nobska

In the spirit of integrating wellness into the CHI, we will incorporate a designated restorative space that all attendees will be able to utilize, as a respite break between activities. The room will include soft light, aromatherapy, healing circles, meditation, stretching and a variety of reading materials. We welcome you to stop by for as long as needed to relax, reflect, re-energize and rejuvenate.

WIFI

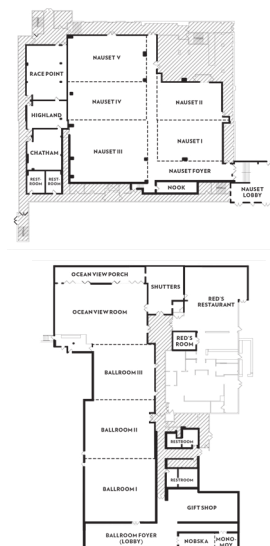
Free WiFi is offered throughout the hotel including guest rooms, meeting space and lobby. In conference meeting space connect to:

Network/Password

Sea Crest_Conference/capecod15

Fitness Center & Pool

Hours of Operation are 8:00 AM - 9:00 PM





welcome

Welcome to the Massachusetts League of Community Health Centers' 2023 Community Health Institute.

As we transition from our front and center role in managing the pandemic for our state's hardest hit communities, there are myriad lessons to consider and never-ending patient needs to meet. This year's CHI seeks to put a spotlight on how Massachusetts health centers are putting those lessons into action and developing innovative solutions to ensure the equitable delivery of care to our patient communities.

From sessions that address systemic inequities, to novel community-based research approaches, to cutting-edge clinical models that increase health access amid national healthcare workforce shortages, this year's agenda is rooted in sharing best practices and promoting the leadership of health centers in addressing some of the nation's most vexing healthcare challenges.

New this year, is a community board track that aims to provide important context and knowledge to health center board members as they work to navigate the increasingly complex environment in which health centers operate. And, as always, we will hear from state and national officials and Mass League staff on the critical issues affecting health centers and their patients, including how to succeed under the hard-fought

FQHC Medicaid PPS rate methodology and primary care sub-capitation payment model.

And finally, in addition to our customary educational offerings, we have included more networking sessions and wellness opportunities in order to enhance your overall experience and to increase our collective resilience and energy for diving deep into content that is designed to support the mission and work of health centers.

We look forward to an exciting and productive week! If there is anything you need throughout the conference, please don't hesitate to reach out to the Mass League staff.

Michael Curry, Esq. , President & CEO

Liz Browne, MBA, Chair, Board of Directors

enjoy



OUR GENEROUS SPONSORS

Gold



Silver



Bronze

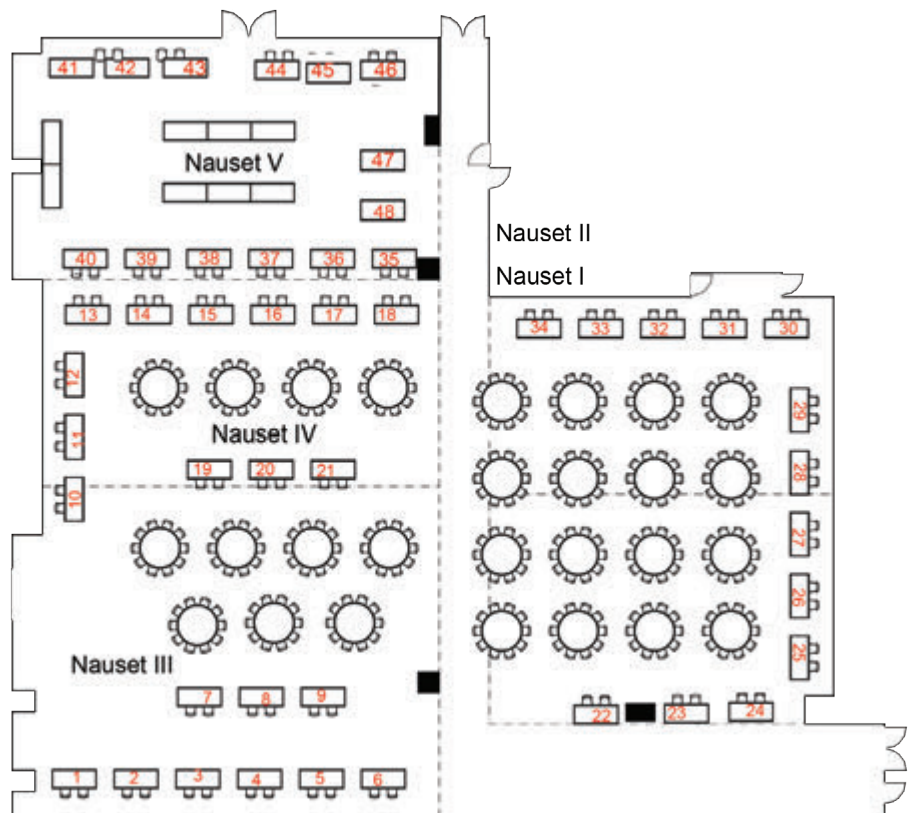


EXHIBITOR'S FAIR

- Booth 1 — Commonwealth Purchasing Group
- Booth 2 — Capital Link
- Booth 3 — Myriad Genetics
- Booth 4 — Avita Pharmacy
- Booth 5 — Trumpet Inc
- Booth-6 — Jackson Physician Search
- Booth 7 — Career Step
- Booth 8 — Commonwealth Care
- Booth 9 — Sellers Dorsey
- Booth 10 — Henry-Schein Dental
- Booth 11 — AndHealth
- Booth 12 — Mutual of America
- Booth 13 — Compliatric
- Booth 14 — Berry Dunn
- Booth 15 — Alcanza Clinical
- Booth 16 — Dynavaz
- Booth 17 — Coverisk
- Booth 18 — Lincoln Investment
- Booth 19 — Merck
- Booth 20 — Dexcom
- Booth 21 — GRM
- Booth 22 — GeBBs Healthcare Solutions
- Booth 23 — Mission Mobile Med
- Booth 24 — Insource Services

- Booth 25 — Cert Intell
- Booth 26 — Optos
- Booth 27 — Upstream
- Booth 28 — Organon
- Booth 29 — Azara Healthcare
- Booth 30 — Aquity Solutions
- Booth 31 — Med Tech Solutions
- Booth 32 — Cohn Reznick
- Booth 33 — Language Line
- Booth 34 — Call 4 Health
- Booth 35 — Afaxys
- Booth 36 — Quest Diagnostics
- Booth 37 — Ez-erc
- Booth 38 — Boston University
- Booth 39 — Next Step Net
- Booth 40 — ZurickDavis
- Booth 41 — Confer Med
- Booth 42 — McKesson Medical-Surgical
- Booth 43 — The SLAM Collaborative
- Booth 44 — UMass Tan Chingfen Graduate School of Nursing
- Booth 45 — GlaxoSmith Kline
- Booth 46 — Pfizer
- Booth 47 — Cardinal Health
- Booth 48 — United Healthcare

NAUSET CENTER



conference agenda

WEDNESDAY

May  May

● **6:30 AM**
Beach

Beach Walk/Run 

Do you enjoy long walks on the beach and admiring ocean views? Join Scune and Tinamarie for an early morning walk on the beach to get your day started.

Scune Carrington, LICSW, Director, Integrated Care, Mass League

Tinamarie Fioroni, LMHC, Director of Behavioral Health Workforce Initiatives, Mass League

● **7:45 AM – 9:00 AM**
Nauset V

CMO Breakfast (invite only)

Susan Dargon-Hart, LICSW, Senior Vice President, Clinical Health Affairs, Mass League

● **8:00 AM – 5:00 PM**
Ballroom Foyer

Registration

● **8:00 AM – 9:00 AM**
Ocean View Room/Ballroom III
Continental Breakfast

● **9:00 AM – 10:30 AM**
Ballroom I & II, Virtual

Welcome & Opening Remarks

Michael Curry, Esq., President & CEO, Mass League

Elizabeth Browne, MBA, Board Chair, Mass League; CEO, Charles River Community Health Center

General Session

Be Better, Do Better, Lead Better: Improving Capacity for Work-Life Integration and Innovation

Dr. Ericka Goodwin, MD, DFAPA, CEO, Goodwin Wellness Enterprises, LLC

● **10:30 AM – 10:45 AM**
Ballroom Foyer

Wellness Break

Beverage/Coffee Break

● **10:45 AM – 11:45 AM**
Ballroom I & II, Virtual

Building Community Engagement into FQHC-based Implementation Research

This session provides an overview of *The Implementation Science Center for Cancer Control Equity*, shares concrete examples of how we have operationalized our commitment to a robust community-engaged approach working with FQHCs, and describes how the center seeks to make real world impacts beyond research publication.

Rebekka M. Lee, ScD, Research Scientist, Harvard T.H. Chan School of Public Health

Susan Dargon-Hart, LICSW, Senior Vice President, Clinical Health Affairs, Mass League

James G. Daly, MPH, Research Project Manager, Harvard T.H. Chan School of Public Health Implementation Science Center for Cancer Control Equity

Madeline E. Davies, MPH, Senior Program Manager, Mass General Hospital

Elsie Taveras, MD, MPH, Chief Community Health Equity Officer, Mass General Brigham; Executive Director, Kraft Center for Community Health at MGH; Conrad Taff Professor, Harvard Medical School

Karen M. Emmons, PhD, Professor, Department of Social and Behavioral Sciences, Harvard T.H. Chan School of Public Health; Principle Investigator for Implementation, Science Center for Cancer Control Equity

● **10:45 AM – 11:45 AM**
Nauset I

Behavioral Health Treatment Tracks: Improving Access to Behavioral Health Services

With increased demand for Behavioral Health services at FQHCs and a need to efficiently utilize limited staff capacity, BH Treatment Tracks offer an organized way to ensure fast access to clinical support and set appropriate patient expectations for available services.

Tim Comeaux, LICSW, LADC1, Behavioral Health Services Director, Manet Community Health Center

Monique Willett, LICSW, Co-Executive Director of Behavioral Health, Fenway Community Health Center

● **10:45 AM – 11:45 AM**
Nauset II

**Protecting Tiny Teeth: Pediatric
Dental & Primary Care Co-Location**

Learn how an independent health center has utilized existing resources to create and sustain a co-located preventive dental and pediatric primary care clinic in response to the COVID-19 pandemic.

Laura Livaditis, MD, FAAP,
Mattapan Community Health Center

Fernanda Freitas, DDS, Dental Director,
Mattapan Community Health Center

Steven Heck, Data Analytics & Quality Improvement
Manager, *Mattapan Community Health Center*

● **10:45 AM – 11:45 AM**
Nauset V

**Improving Financial Performance Under PPS &
Primary Care Sub Capitation Mode**

In the last two years, health centers and the League have worked with MassHealth to develop and implement both a new FQHC Medicaid Prospective Payment System (PPS) rate methodology and a new primary care sub capitation payment model. In the midst of this changing reimbursement environment, centers will learn the key drivers of success under both models, identify potential PPS rate revisions, and how to manage financial performance under sub capitation.

Kaitlin McColgan, Senior Vice President, Government
Affairs & Public Policy, *Mass League*

Kristen Pieper, MMS, Senior Manager, Health Center
Reimbursement & Transformation, *Mass League*

Peter R. Epp, CPA, Partner, Community Health Center
Practice Leader, *CohnReznick LLP*

● **12:00 PM – 1:00 PM**
Chatham

CMO Lunch (invite only)

Susan Dargon-Hart, LICSW, Senior Vice President,
Clinical Health Affairs, Mass League

● **12:00 PM – 1:00 PM**
Ocean View Room/Ballroom III
Networking Lunch

● **1:15 PM – 2:15 PM**
Ballroom I & II, Virtual

**Building Research Partnerships that Benefit
Health Centers & Communities**

In this session, health centers leaders will share their experiences of participating in research, what benefits they have experienced and what challenges they have navigated;

including the value proposition of and impact that center participation can have for patients, staff, the organization and the profound implications for equity in care.

Susan Dargon-Hart, LICSW, Senior Vice President,
Clinical Health Affairs, Mass League

Mel E. Benson, MBA, CFO,
Brockton Neighborhood Health Center

Renee Crichtlow, MD, FAAFP, CMO, *Codman Square;*
Vice-Chair Health Equity, *Boston University Department*
of Family Medicine; Lecturer, *Harvard T.H. Chan School of*
Public Health; President-Elect, *Society of Teachers of*
Family Medicine

Stephanie Sullivan, PhD, LMHC, CEO, *Boston Health*
Care for the Homeless Program

● **1:15 PM - 2:15 PM**
Chatham

Be Well Together Team Meeting (invite only)

Watura Finley, Senior Vice President,
Workforce & Training, *Mass League*

Gaurdia Banister, Ph.D. RN FAAN, Executive Director,
The Institute for Patient Care and Director,
The Yvonne L. Munn Center for Nursing Research.

● **1:15 PM – 2:15 PM**
Nauset I

**Capital Development:
Building Upon What We Know**

In light of the recent \$70M in funding for health center capital projects from the Massachusetts Executive Office of Health and Human Services, this session will provide attendees with a strategic approach to capital planning and financing.

Tony Skapinsky, Senior Project Consultant, *Capital Link*
Dave Kleiber, MBA, Senior Consultant, *Capital Link*

● **1:15 PM – 2:15 PM**
Nauset II

Building DEI-B from the Ground Up

Duffy Health Center has worked since summer of 2020 to develop and embed DEI-B (Diversity, Equity, Inclusion, and Belonging) practices into daily operations across the agency stewarded by a staff volunteer committee.

Emily Hildebrant, MS, Quality Improvement Manager,
Duffy Health Center

Sara Grambach, MS, Chief Development & Community
Engagement Officer, *Duffy Health Center*

● **1:15 PM – 2:15 PM**
Nauset III

Bridging the Access-Barrier: A FQHC-Led Workforce Equity & Learning Models

The Caring Health Center Learning Institute is a transformative workforce-equity development model that bridges access and centers learning by creating culturally sustaining development opportunities and support within community health. This model expands traditional workforce development frameworks and responds to the chronic impact of systemic oppression on our communities.

Yedalis Ruiz, PhD, Chief Access and Equity Officer, *Caring Health Center*

Tania Barber, MBA, President/CEO, *Caring Health Center*

Johanna DeBari, MA, Director of Workforce Equity & Training, *Caring Health Center*

● **1:15 PM – 2:45 PM**
Nauset IV

Building Anew: Wellness & Sustainability in the Mental Health Workforce

Given the intersection of a staffing shortage in mental health alongside a national mental health crisis, institutions benefit from developing proactive approaches to staff wellness. This session explores drivers of workforce strain in the current care delivery system and identifies solutions to build a diverse, trauma-informed, sustainable mental health workforce.

Sonia Erlich, LMHC, MFA, MA, Deputy Director of Workforce Development & Training, *TEAM UP for Children, Boston Medical Center*; Psychotherapist, *DotHouse Health*

Anita Morris, MSN, FNP-BC, Project Director, *TEAM UP for Children, Boston Medical Center*

Elijah Boliver, MPH, Research & Implementation Assistant, *TEAM UP for Children at Boston Medical Center*

● **1:15 PM – 2:45 PM**
Nauset V

A Grand Milestone: Reflections & Findings Following 1,000+ Administrations of XR SC Buprenorphine in the Outpatient Clinic Setting

Lessons learned from one CHC's growing Sublocade program will be shared in a presentation format with Q+A at the end.

Christina Hanley, BSN, RN, CARN, Nurse Care Manager, *Boston Healthcare for the Homeless Program*

Jacely Farmerie, CARN, OBAT, Nurse Team Manager, *Boston Healthcare for the Homeless Program*

Joseph Wright, MD, Director of Addiction Treatment, *Boston Healthcare for the Homeless Program*

Evan Russell, NP, OBAT Nurse Practitioner, *Boston Healthcare for the Homeless Program*

Samantha Ciarocco, MSW, LICSW, LADCI, Clinical Social Worker, *Boston Healthcare for the Homeless Program*

● **2:15 PM – 3:00 PM**
Nauset Foyer

Wellness Break
Beverage/Coffee Break

● **2:15 PM – 3:30 PM (registration required)**
Race Point

Healing Circle 

Guided by a facilitator, the healing circle provides a safe and non-judgmental space for participants to share their experiences, feelings, and emotions, allowing them to feel heard and supported. This practice can help participants release emotional blockages and find greater clarity and healing.

Gia Angluin, Director of Learning & Development, *Mass League*

● **3:00 PM – 4:00 PM**
Ballroom I & II , Virtual

Supplier Diversity: Best Practices & Insights on Building an Inclusive Procurement Strategy in Your Health Center

In this session, we will discuss best practices, insights from leaders in the supplier field, and provide attendees with resources available to health centers.

Scott Halterman, MBA, Vice President, Strategic Operations, *CommonWealth Purchasing*

Scott Mason, Member Resource Consultant, *CommonWealth Purchasing*

● **3:00 PM – 4:00 PM**
Nauset I

Improving Health Outcomes & Reducing Healthcare Spending through Mobile Care

In this session, we will create awareness of the cost of inequity, define the costs of inaction, outline risks and rewards of utilizing Mobile Care to address inequities, share audience-peer-group successes and failures of Mobile Care programs and provide a guide to Mobile Care in your community.

Rett Haigler, Senior Vice President, *Mission Mobile Medical*

Mollie Williams, Executive Director, *The Family Van & Mobile Health Map Harvard Medical School*

● **3:00 PM – 4:00 PM**

Nauset II

Psychological Safety through a Diversity Lens in Healthcare Teams

If bringing the healthcare team to its optimal level of functioning is within your leadership and organizational expectations and psychological safety is not a core component, then this is the session for you.

Nelly Burdette, PsyD, Associate Vice President, Integrated BH, *Providence Community Health Centers*

● **3:00 PM – 4:00 PM**

Nauset III

Utilizing the Integrated Care Model for Behavioral Health and Primary Care in reducing Hypertension in Latino Males

Our goal is to discuss the impact of utilizing the Integrated Care Model to improve patient outcomes. Our Integrated Teams consists of Community Health Workers, Behavioral Health, Primary Care Physician, Nursing and Clinical Pharmacists. Our team is addressing Social Determinants of Health, depression and physical health. The goal has been to address all health, social and emotional issues to reduce Latino's hypertension readings. Our patient centered approach is one in which the patient participates in their care and leads the team in helping define their outcomes. Care is based on relationships and everyone working collaboratively to help the patient. We are also providing care addressing equity, cultural and logistic competency.

Mimi Gardner, LICSW, Chief Clinical Officer, *Charles River Community Health*

Aviva Freidman, MD, Family Physician, *Charles River Community Health*

Jeffmie Arriaza - Morales, RN, Director of Nursing, *Charles River Community Health*

Ben Sturm, RPH, Director of Pharmacy, *Charles River Community Health*

Josh Nye, LMHC, Director of Behavioral Health, *Charles River Community Health*

Stephanie Padilla, Integrated Community Health Worker, *Charles River Community Health*

● **3:00 PM – 4:00 PM**

Nauset IV

Improving the Healthcare System through Diversity in the Field of Medicine

Healthcare outcomes and patient and provider satisfaction rates improve with a more diverse workforce. What progress have we made over the past decades? What improvements

in outcomes does it bring? What techniques can improve diversity of physicians?

Vonzella Bryant, MD FACEP FAAEM, Assistant Professor of Emergency Medicine & Assistant Dean of Student Affairs

● **3:00 PM – 4:00 PM**

Nauset V

Empowered by the Sun: Benefits of Solar-Powered Health Centers for Communities

What if solar installations could ensure continuity of care, and mitigate against lost revenue due to electrical outages while also fixing your electricity costs for 20 years?

Rebecca L. Regan, CEO, *Capital Link*

Andrew MacCalla, Co-founder/CEO, *Collective Energy*

Tina Wright, Director, Emergency Management, *Mass League*

● **3:00 PM – 4:00 PM**

Chatham

Renovating Health Care through Innovative Practice Transformation

At Hilltown Community Health Center, we are reinventing how we function within the large complex health care system. We are looking for ways to increase efficiency and improve outcomes through a patient centric point of view. An exciting pilot that exemplifies this is CHW led panels.

Michael Purdy, OD, MPH, Chief Clinical and Community Service Officer, *Hilltown Community Health Centers, Inc.*

Katie Kiroac, Human Resources Generalist, *Hilltown Community Health Centers*

● **4:30 PM – 5:30 PM**

Ballroom I & II, Virtual

Mass League Annual Meeting, Board Meeting & Health Equity Institute Annual Meeting

● **4:30 PM – 5:30 PM (registration required)**

Race Point

Healing Circle 

Guided by a facilitator, the healing circle provides a safe and non-judgmental space for participants to share their experiences, feelings, and emotions, allowing them to feel heard and supported. This practice can help participants release emotional blockages and find greater clarity and healing.

Gia Angluin, Director of Learning & Development, *Mass League*

● **5:30 – 6:30 PM**

Oceanview Room

Networking Reception PanNeubean Steel

THURSDAY

May  May

- **6:00 AM – 6:45 AM**
Beach or Pool Deck

Yoga: Sunrise Slow Flow

A gentle way to start your day moving through yoga postures, paired with breath to wake up our bodies, as we take in the ocean views and ebb n flow with the methodical waves. Bring a mat or we can provide you with one.

Brenna Miller, Fitness & Wellness Director, *Willows of Worcester*; Yoga, Pilates, Postural & Thai Bodywork Therapist

- **7:00 AM – 8:00 AM**
Ocean View Room/Ballroom III
Breakfast

- **7:30 AM – 5:00 PM**
Ballroom Foyer
Registration

- **7:00 AM – 8:00 AM**
Shutters

CHC Legal Counsel/Compliance Officers & Contract Managers Breakfast (Invite only)

Keplin Allwaters, Esq., General Counsel & Chief Compliance Officer, *Mass League*

- **7:00 AM – 8:00 AM**
Chatham

COO Breakfast (invite only)

Diana Erani, MBA, Senior Vice President, COO, *Mass League*

- **7:00 AM – 8:00 AM**
Race Point

Epic User Breakfast (invite only)

Susan Adams, PMP, Vice President, Health Informatics, *Mass League*

- **8:30 AM – 10:30 AM**
Ballroom I & II, Virtual

Welcome & Opening Remarks General Session: Federal Session

Michael Curry, Esq., President & CEO, *Mass League*

Mary Ellen McIntyre, Senior Vice President, Compliance, *Mass League*

Kaitlin McColgan, Senior Vice President, Government

Affairs & Public Policy, *Mass League*

Ernia Hughes, MBA, Director, Office of Health Center Investment Oversight, Bureau of Primary Health Care

Vacheria Keys, JD, Director of Policy & Regulatory Affairs, *National Association of Community Health Centers*

Dianne K. Pledgie, Esq., Partner and Compliance Counsel, *Feldesman Tucker Leifer Fidell LLP*

- **10:30 AM – 4:00 PM**
Ballroom Foyer

Office Hours

Schedule time to meet 1:1 with HRSA's Ernia Hughes

Ernia Hughes, MBA, Director, Office of Health Center Investment Oversight, Bureau of Primary Health Care

- **10:30 AM – 11:00 AM**
Nauset Center
Networking Break/Exhibitors
Beverage/Coffee Break

- **11:00 AM – 12:00 PM**
Ballroom I & II, Virtual

Primary Care Telehealth for Medicaid Populations: Patient and Provider Perspectives

We will describe results of mixed-methods research about primary care telehealth with both Medicaid patients and providers, including perspectives on how to improve perceptions of quality of care and both barriers and facilitators for a Medicaid population.

Carolyn Fisher, PhD, Research and Evaluation Scientist, *Institute for Community Health*

Molly Totman, MPH, Director of Quality, *Community Care Cooperative*

- **11:00 AM – 12:00 PM**
Ballroom III

Research at Stanley Street Treatment & Resources, Inc: Science in the Community

This session reviews a 20-year history between Stanley Street Treatment and Resources, or SSTAR, and research. This relationship began with a collaboration with the Clinical Trials Network or CTN. As our experience grew, research supported the development of a research department, provided evidence-based, highly skilled treatment to hundreds of patients, and fostered numerous careers.

Genie L. Baily, MD, ABPM, DFAPA, CBMO, Director of Research and Director of Medications for Addiction Treatment, *Stanley Street Treatment and Resources*

● **11:00 AM – 12:00 PM**
Chatham

Creation of a Successful Nurse-led Addiction Treatment Program in a Rural FQHC

How to implement a successful and robust nurse-led Office Based Addiction Treatment Program, discussed by a multi-disciplinary clinical team.

Rachel Katz, FNP-BC, Director of Addiction Services, Community Health Center of Franklin County

Lily Stafford, BSN, RN, Lead OBAT Nurse, Community Health Center of Franklin County

Stephen Segatore, DNP, Associate CMO, Community Health Center of Franklin County

● **11:00 AM – 12:00 PM**
Race Point

Innovative Strategies to Building a Robust Career Pathway for Community Health Workers

This session will provide a roadmap for strategic partnership building and collaborative support by addressing uniquely dynamic needs of non-traditional experiential learners in order to ensure the successful recruitment and retention of a diverse behavioral health workforce.

Gina Dessources Benjamin, MSW, LICSW, Associate Director of Clinical and Community Services, William James College

Julia Costa Rodenhiser, MS, Program Administrator, Center for Workforce Development, William James College

● **12:00 PM – 2:00 PM**
Nauset Center

**Exhibitor Fair/Lunch
Lunch/Networking Session**

● **12:00 PM – 1:00 PM**
Chatham

HR Forum Lunch (invite only)

Gia Angluin, Director of Learning & Development, Mass League

● **2:00 PM – 3:30 PM**
Ballroom I & II, Virtual

The 3 Cs of 340B Pharmacy Programs: Contracting, Compliance, & Claims

Health centers increasingly must work with multiple parties to manage their 340B programs, navigate manufacturer restrictions, and take advantage of emerging opportunities in areas like telemedicine and clinical pharmacy. Come to this session and learn the latest on contracting with third

parties, complying with 340B program requirements, and getting paid fairly for 340B drugs.

Keplin Allwaters, Esq., General Counsel & CCO, Mass League

Carrie Riley, Esq., Partner, Feldesman Tucker Leifer Fidell LLP

Jason Reddish, Esq., Partner, Feldesman Tucker Leifer Fidell LLP

● **2:00 PM – 3:30 PM**
Ballroom III

Primary Care Sub-Capitation with MassHealth is Here. Now what.

In April, MassHealth launched the next waiver financing primary care through a sub-capitation. Moving away from fee-for-service has been the desire of FQHCs, and now that it is here, how do health centers transform effectively? We describe the journey of two FQHCs leading the way for success in value-based care.

Mimi Gardner, LICSW, Chief Clinical Officer, Charles River Community Health

Jessica Calabrese, MPA, COO, Community Health Center of Franklin County

Amanda Frank, MSW, MPH, Vice President, Practice Transformation, Community Care Cooperative

● **2:00 PM – 3:00 PM**
Chatham

Population Trauma & Chronic Illness: A Medical Framework

Serena Williams' story shines a light on the critical issue of population trauma in healthcare. Despite access to care, black women like her face higher risk of poor maternal outcomes. It's time to address the physiological impact of trauma on marginalized communities and improve their healthcare outcomes. Join the movement for equitable, trauma-informed care.

Karen Abdool, MD, PhD, Physician Consultant, Psychiatrist, Diversity Coach, Community Educator, New England Medical Association/Beryllium Psychiatric Services

● **2:00 PM – 3:30 PM**
Race Point

Leveraging No-Show Rate Improvements to Drive APM-Readiness

A case study of how 23 health centers achieved improvements in No-Show rates, Productivity, and Cycle Times

Amanda Laramie, COO, Coleman Associates

● **3:00 PM – 3:45 PM**

Nauset Foyer

Wellness Break

Beverage/Coffee Break

● **3:30 PM – 4:00 PM**

Nobska

Breathing & Meditation 

For mind, body and soul balance. Learn some different types of pranayama (breathing techniques) to help relax your mind and body. We will ease into some basic meditation, mindfulness and guided meditation.

Brenna Miller, Fitness & Wellness Director, *Willows of Worcester*; Yoga, Pilates, Postural & Thai Bodywork Therapist

● **3:45 PM – 4:45 PM**

Ballroom I & II, Virtual

MassHealth Updates & Innovations

The MassHealth team will present on MassHealth initiatives and updates, such as the MassHealth 1115 waiver, primary care sub-capitation implementation, health equity and workforce investments, health-related social needs programming, and important policy updates focused on expanding coverage and access.

Liz Sanchez, MPH, Senior Director, Policy & Health Access, *Mass League*

Martha Farlow, MHA, Policy Director, *Office of Payment Care Delivery Innovation, MassHealth*

Monica Sawhney, Chief of Provider & Member Programs, *MassHealth*

Ryan Schwarz, MD, MBA, Chief, *Office of Payment & Care Delivery Innovation, MassHealth*

Gary Sing, PhD, Senior Director of Strategic Initiatives, *MassHealth*

● **3:45 PM – 4:45 PM**

Chatham

Integrative Medicine Groups — Building Resilience, Community, and Wellness

The Integrative Medicine Groups create an opportunity for both patients and providers to broaden their approach to addressing depression, pain, and comorbid conditions. Participants learn techniques such as yoga and meditation that promote self-healing and agency. This occurs alongside medical and mental health guidance and within the context of a supportive community.

Ivy Brackup, MD, MAc, Family Medicine, *DotHouse Health*

Sonia Erlich, LMHC, MFA, MA, Deputy Director of Workforce Development and Training, *TEAM UP for Children, Boston Medical Center*; Psychotherapist, *DotHouse Health*

● **3:45 PM – 4:45 PM**

Race Point

A FQHC-Led Research Program Portfolio: Strategies, Findings and Lessons Learned

Based on research conducted at Caring Health Center, this session will describe a portfolio of research partnerships, theoretical frameworks, study designs, findings and translation to practice and will present the lessons learned and steps taken to develop a mission-driven, sustainable health equity research program infrastructure within a FQHC.

Cristina Huebner Torres, MA, PhD, Chief Executive Vice President, Strategy and Research Officer, *Caring Health Center*

Tania Barber, MBA, President/CEO, *Caring Health Center*

Vrinda Prakash, MPH, BDS, Program Director, Research & Epidemiology, *Caring Health Center*

Cassidy Hayes, MPH, Director of Public Health Programs, Policy and Advocacy, *Caring Health Center*

Johanna Lopez, MS, Director of Social Care & CHW Initiatives, *Caring Health Center*

● **5:00 PM – 6:00 PM (registration required)**

Nobska

Healing Circle 

Guided by a facilitator, the healing circle provides a safe and non-judgmental space for participants to share their experiences, feelings, and emotions, allowing them to feel heard and supported. This practice can help participants release emotional blockages and find greater clarity and healing.

Gia Angluin, Director of Learning & Development, *Mass League*

● **6:30 PM – 9:30 PM**

Off-Site

CEO Dinner (invite Only)

Michael Curry, Esq., President & CEO, *Mass League*

Shirma Pierre, Chief of Staff, *Mass League*

FRIDAY

May  May

● **6:30 AM**
Beach

Beach Walk/Run 

Do you enjoy long walks on the beach and admiring ocean views? Join Scune and Tinamarie for an early morning walk on the beach to get your day started.

Scune Carrington, LICSW, Director, Integrated Care, Mass League

Tinamarie Fioroni, LMHC, Director of Behavioral Health Workforce Initiatives, Mass League

● **7:00 AM – 8:15 AM**
Ocean View Room/Ballroom III
Breakfast

● **7:30 AM – 11:00 AM**
Ballroom Foyer
Registration

● **8:30 AM – 9:30 AM**
Ballroom I & II, Virtual
Advancing Health Equity with Inclusive Leadership

Vernetta Walker, JD, President & CEO, Walker & Associates Consulting

9:30 AM – 9:45 AM
Ballroom Foyer
Wellness Break
Coffee Break

● **9:45 AM – 11:15 AM**
Ballroom I & II, Virtual
Essential Components to Ensure a Successful and Engaged Board of Directors (board track)

Keplin Allwaters, Esq., General Counsel & CCO, Mass League

Mary Ellen McIntyre, Senior Vice President, Compliance, Mass League

Carrie Riley, Esq., Partner, Feldesman Tucker Leifer Fidell LLP

Jacki Leifer, Esq., Sr. Partner, Feldesman Tucker Leifer Fidell LLP

Amelia (Lia) Spiliotes, Esq., Interim Sr. Director of CRVFHP, Mass League

● **9:45 AM – 10:45 AM**
Chatham

Expanding Contraceptive Access: Achieving Tier 3 Requirements & Beyond

Learn from health center leaders championing critical practice transformation efforts aimed at improving contraceptive access across 8 domains (including training providers in LARC insertion/removal, utilizing the entire care team, and adapting EMRs to improve pregnancy intention screening) ultimately, improving patient care and excelling beyond tier 3 LARC requirements.

Katherine D'Onfro, MPH, Senior Manager of Public Health Initiatives, Mass League

Patricia Nadle, CEO, Outer Cape Health Services

Marisela Fermin-Schon, Medical Director, Hilltown Community Health Center

Seville Meli, Vice President of Practice Transformation, Upstream USA

● **9:45 AM – 10:45 AM**
Race Point

Practical Diversity, Equity, Inclusion, and Belonging (DEIB) Approaches to Talent Acquisition

The session will provide strategies for increasing diversity in your candidate pools and strengthening your hiring process.

Saleha Walsh, Vice President, Insource Services, Inc.

Shavon Andrews, Team Lead & Senior HR Consultant, In-source Services, Inc.

● **10:45 AM – 11:15 AM**
Ballroom Foyer
Wellness Break
Beverage/Coffee Break

● **10:45 AM – 1:00 PM**
Oceanview Room
Lunch

● **11:15 AM – 12:15 PM**
Ballroom I & II, Virtual
Financial Performance & Metrics That Matter (board track)

Dave Kleiber, MBA, Senior Project Consultant, Capital Link

● **12:25 PM – 1:25 PM**
Ballroom I & II, Virtual

**Let's Make A Deal — A Guided Tour of
Partnership Options for Community
Health Centers** (operations/board track)

Amelia (Lia) Spiliotes, Esq., Interim Sr. Director of
CRVFHP, *Mass League*

Greg Wilmot, President & CEO, *East Boston
Neighborhood Health Center*

Jacki Leifer, Esq., Senior Partner, *Feldesman Tucker
Leifer Fidell LLP*

Carrie Riley, Esq., Partner, *Feldesman Tucker
Leifer Fidell LLP*

Keplin Allwaters, Esq., General Counsel & CCO,
Mass League

● **1:25 PM – 1:30 PM**
Ballroom I & II, Virtual

Closing Remarks

Diana Erani, MBA, Senior Vice President, COO,
Mass League



= Well-being activities

Improve
Access
& Equity

With Transformative Mobile
Health Programs

CPG **CommonWealth**
PURCHASING GROUP
— SAVING MONEY TOGETHER —

CommonWealth Purchasing Group, LLC. is the nation's leading group purchasing organization for community health centers and other nonprofit organizations. We offer our members cost effective and operationally beneficial solutions through national suppliers and service providers. We ensure that our members are receiving the best possible price and customer service at all times.

THROUGH OUR GROUP PURCHASING CONTRACTS, WE SAVE OUR MEMBERS OVER \$30 MILLION A YEAR.

- Shop with confidence. Our national and regional contracts ensure highly competitive pricing.
- Designed to save your organization thousands of dollars a month on supplies, equipment and services.
- Cohesive data reporting will keep you apprised of your spending and saving patterns.
- Every CPG member has a designated CPG consultant. We're here to help!
- As our membership grows, so does our ability negotiate even lower pricing for you.

CommonWealth Purchasing Group
40 Court Street, 10th floor, Boston, MA 02108
info@cwpgroup.com • 833-274-0313
www.purchasing.com

Care Access

The future of
medicine is in
the community.

Give your patients access to health screenings and clinical research through your clinic.

CONTACT US
Calvin.Thompson@careaccess.com

Proud supporters of the
**Massachusetts League of
Community Health Centers**

sellers dorsey
realize the opportunity.



40 Court Street
10th Floor
Boston, MA 02108

617-426-2225 www.massleague.org